



# 76(5/8)Series

## LED Downlights (325mA)



Long Life Reliability  
does not cost the earth

LPA-EXCIL ELECTRONICS

### Feature Summary

- High efficiency low-maintenance LED-based downlight.
- Wide range of LED options available.
- Cool running designs give enhanced passenger comfort.
- Compatible with LPA-Excil 671 constant current LED PSU.
- Several fixed position and 'eyeball'-style enclosures available, with a variety of exterior finishes.




765 Series



766 Series

### Product Codes

- Individual products in the LED downlight range are referred to by product code.
- LPA-Excil's most common LED downlight products are listed in the tables below\*.

76(5/8) Product Range Standard Features			
Nominal Supply Current	325		mA DC
Input Connector	3-Way Entrelec MF16 Connector		
Spring-Retained Enclosure	Yes		

765 Large Fixed Enclosure 3 LED Downlight					
Cool White LEDs			Warm White LEDs		
Exterior Finish	Optics	Product Code #	Exterior Finish	Optics	Product Code #
Brushed Nickel	Narrow Lens	765102	Brushed Nickel	Narrow Lens	765111
Chrome		765101	Chrome		765110
White		765100	White		765109
			<b>Table Continued Overleaf...</b>		

\* Other LED downlight variants are also available. Contact LPA-Excil for more details.



<b>765 Large Fixed Enclosure 3 LED Downlight (Continued...)</b>					
<b>Cool White LEDs</b>			<b>Warm White LEDs</b>		
<b>Exterior Finish</b>	<b>Optics</b>	<b>Product Code #</b>	<b>Exterior Finish</b>	<b>Optics</b>	<b>Product Code #</b>
Brushed Nickel	Medium Lens	765105	Brushed Nickel	Medium Lens	765114
Chrome		765104	Chrome		765113
White		765103	White		765112
Brushed Nickel	Wide Lens	765108	Brushed Nickel	Wide Lens	765117
Chrome		765107	Chrome		765116
White		765106	White		765115

<b>768 Small Eyeball Enclosure Single LED Downlight</b>					
<b>Cool White LEDs</b>			<b>Warm White LEDs</b>		
<b>Exterior Finish</b>	<b>Optics</b>	<b>Product Code #</b>	<b>Exterior Finish</b>	<b>Optics</b>	<b>Product Code #</b>
Brushed Nickel	Narrow Lens	768102	Brushed Nickel	Narrow Lens	768111
Chrome		768101	Chrome		768110
White		768100	White		768109
Brushed Nickel	Medium Lens	768105	Brushed Nickel	Medium Lens	768114
Chrome		768104	Chrome		768113
White		768103	White		768112
Brushed Nickel	Wide Lens	768108	Brushed Nickel	Wide Lens	768117
Chrome		768107	Chrome		768116
White		768106	White		768115

## Input Specification

	765 Series	768 Series	
Number of LEDs in Device	3	1	mA DC
Nominal Input Current	325		
Rated Electrical Power (@ 325mA DC)	3.3W	1.1W	W

## Output Specification

	765 Series			768 Series			
	N	M	W	N	M	W	
Lens Type*							
Lens Beamangle	±6°	±15°	±22.5°				Deg
Spot Radius @ 2m (to 50% Intensity)	0.2	0.5	0.8				m
Illuminance Rating (2m From Unit)	380	120	40				Lux

## Environmental Specification

	765 Series	768 Series	
Unit Weight	125	75	g
Sealing Rating (Front Face)	IP65	IP42	
Shock and Vibration	EN61373	EN61373	
Dry Heat (Steady-State)	RIA I3 1990 1995	70	°C
		6	Hrs
Operating Temperature Range	-25 to +55		°C
Projected Time to 70% Of Initial Lumen Output at 25°C Ambient	100,000		Hrs

## Safety Specification

All 76X variants come equipped with the following protection circuitry as standard:

- **Input Voltage Transient Suppression.**
- **Series Chain Open Circuit Detection, and Automatic Bypass.**  
In the unlikely event of an LED failure current will be shunted around the unit LED head. This ensures that continuity in the series downlight supply circuit is maintained, and other lighting units on the same bus are not affected.

\* N=Narrow Lens, M=Medium Lens, W=Wide Lens

## Installation Guide

### General Installation Notes: 76X Products

LPA-Excil's 76(5/6/8) series downlights are diode-based devices. Diodes are unidirectional devices, current can only flow from +ve to -ve terminals.

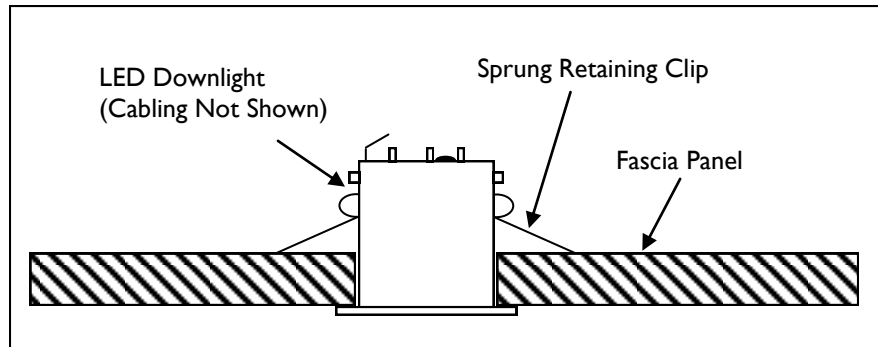
TAKE CARE TO MATCH THE POLARITY OF THE LED DOWNLIGHT TERMINALS WITH THE POLARITY OF THE SUPPLY DURING INSTALLATION. MISCONNECTION OF THE DEVICE ACROSS THE POWER SUPPLY MAY RESULT IN **DESTRUCTION** OF THE PRODUCT.

All 76X Variants - Input Connector Pin Out		
Pin 0	Earth	V DC
Pin 1	+ve	
Pin 2	-ve	

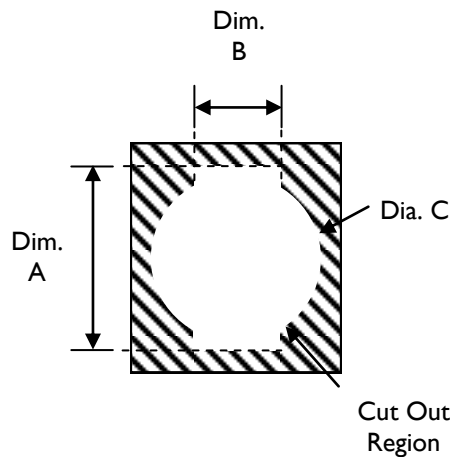
## Mechanical Specification

### LED Downlight Panel Mounting Arrangement

- The LED downlight is held in position against a vehicle fascia panel via twin sprung retaining clips, as shown below.



### Mounting Panel Cut-Out Specification



Fascia Panel Cut-Out Dimensions			
	765 Series	768 Series	
'A'	71-72	54-55	mm
'B'	17-18		
'C'	Ø 63 (+0.5,-0)	Ø 47 (+0.5,-0)	

Figure 1 - Enclosure for 765 Series Fixed Triple LED Downlight  
Entrelec MF16 Connector

All Dimensions in mm unless stated otherwise

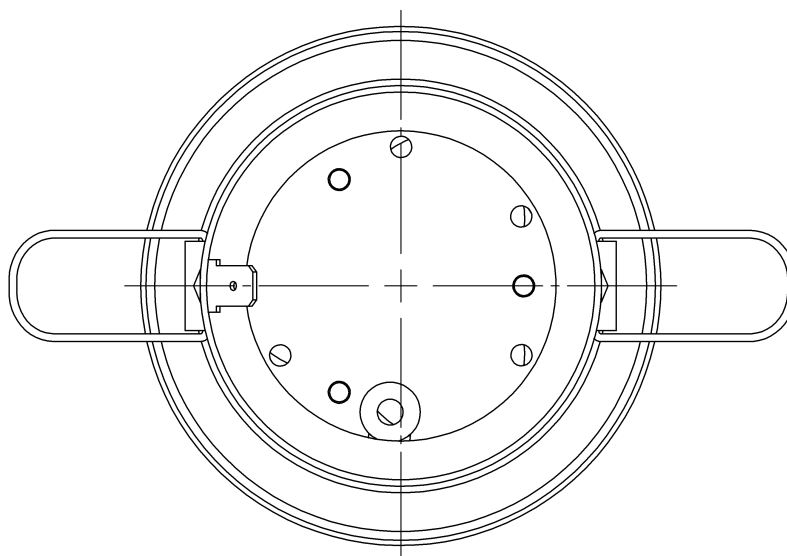
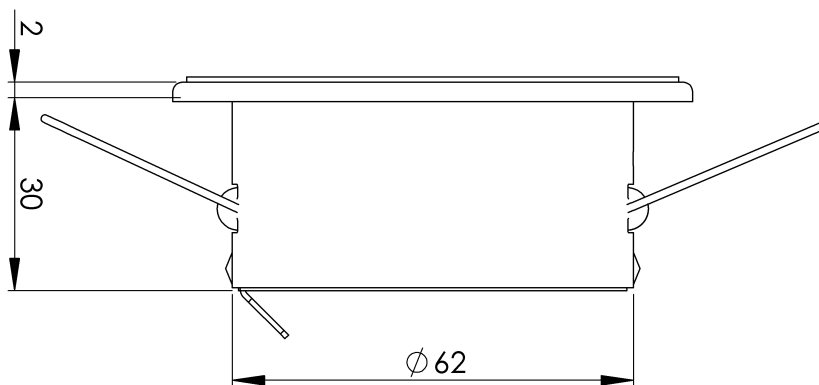
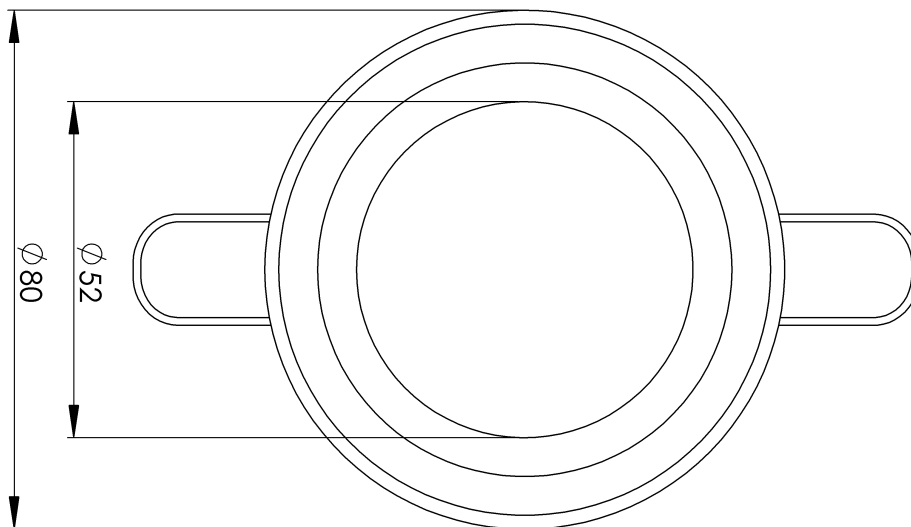
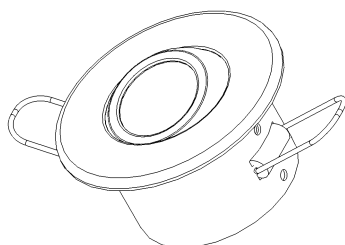
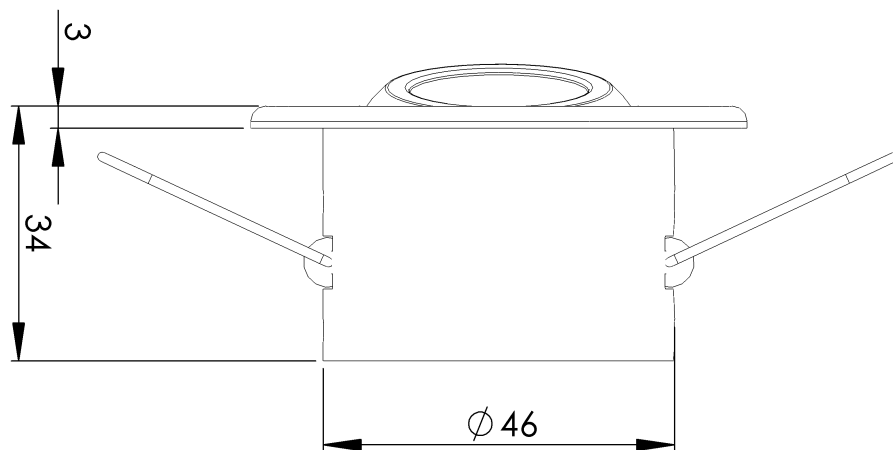
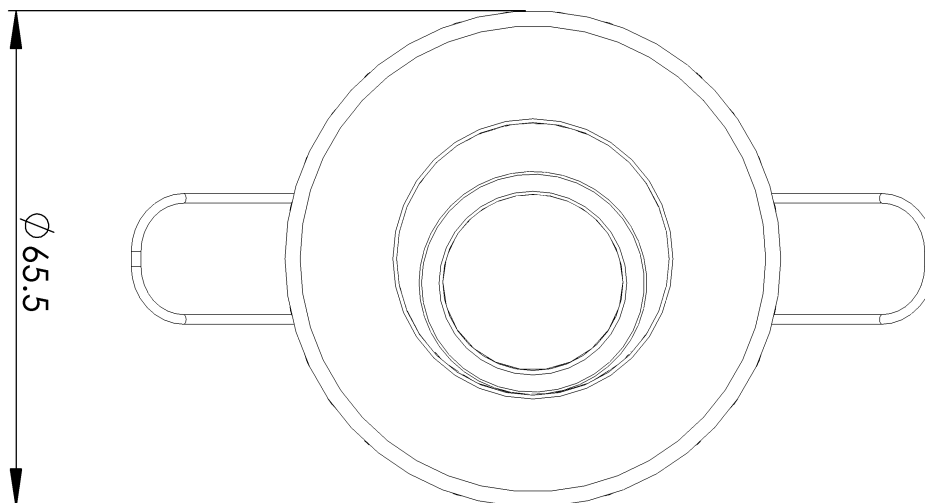


Figure 3 - Enclosure for 768 Series 'Eyeball' Single LED Downlight  
Entrelec MF16 Connector



LPA-Excil makes every effort to ensure the accuracy of the information contained within this datasheet. However we reserve the right to withdraw and re-issue this datasheet at a later date.



LPA-Excil Electronics  
Ripley Drive, Normanton,  
WF6 1QT, UK  
Tel: +44 (0)1924 224100  
Fax: +44 (0)1924 224111

LPA Excil Electronics is a member of the LPA group