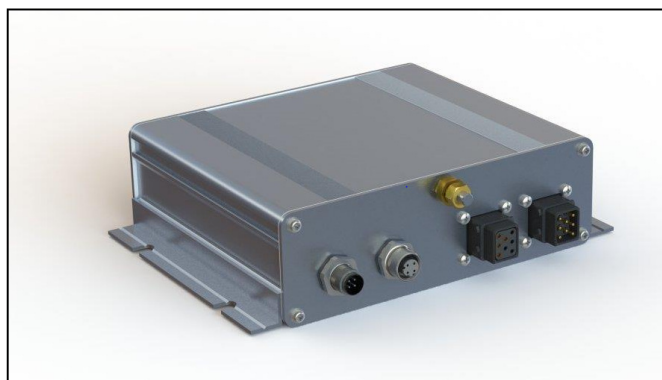


# 1023 Series Lighting Control Unit



## Product Overview

- › Addressable lighting controller
- › Fully compatible with the vehicle control system via Ethernet
- › Acts as the control unit for 1023 series LED modules and vestibule luminaire
- › Allows a fully controllable lighting system capable of scene setting, dimming, fault detection and System life feedback
- › Can address up to 127 units, from full luminaires to single LED modules.



## Product Codes

Description	Part Code
Lighting Control Unit	1023106

## Specification

Shock and Vibration	EN61373
Operating temperature range (°C)	-25 - +85
Storage temperature ranges (°C)	0 - +50
Input Supply Voltage range	67— 140 V
Input voltage Limit without Damage	154V
Input Current (Max Load @110VDC) Typical	100mA
Control Bus Voltage	17V
Control Bus Current limit	215mA



IP20

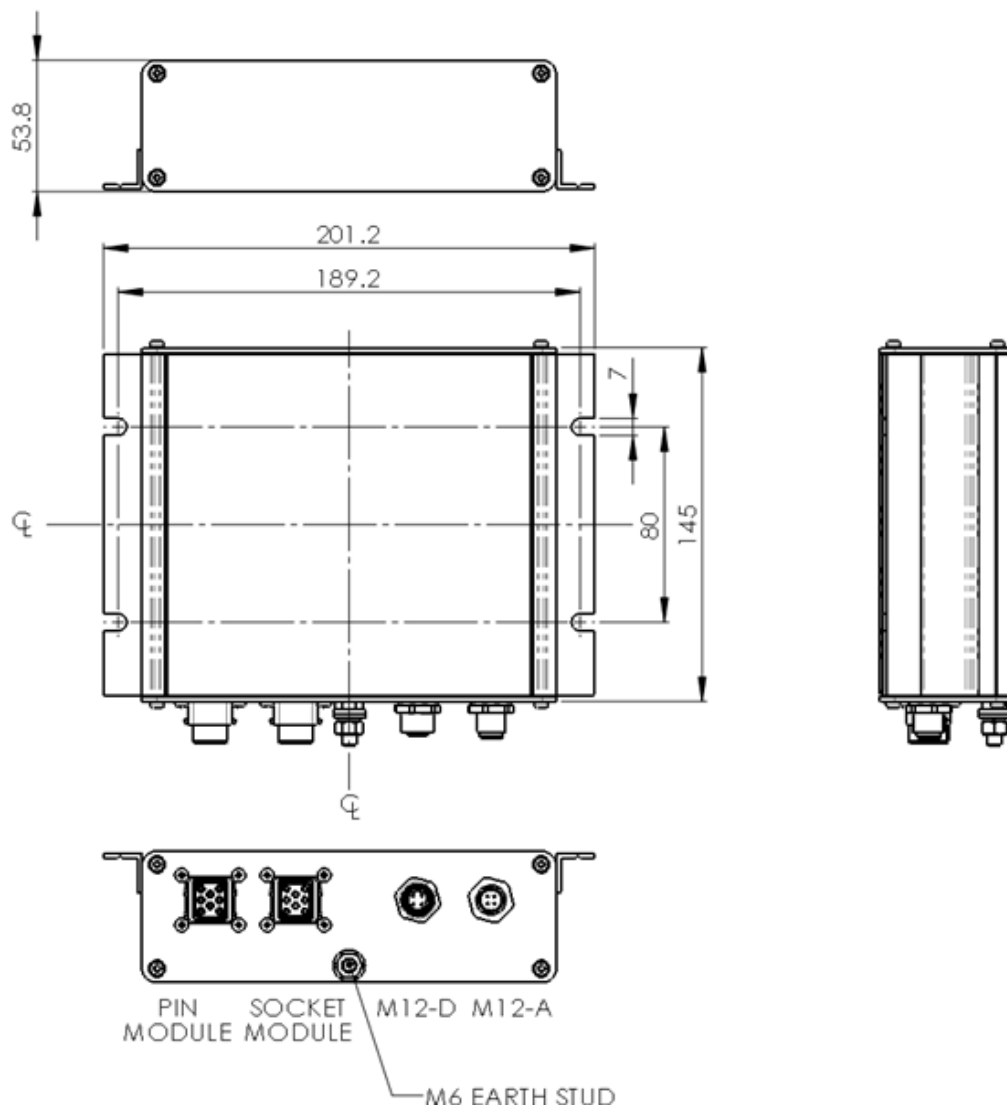


LPA Excil Electronics  
Ripley Drive  
Normanton  
Wakefield  
WF6 1QT

Email | www.lpa-group.com  
Website | +44 (0) 1924 224100  
Switchboard | +44 (0) 1924 224100  
Fax | +44 (0) 1924 224111

## Mechanical Specification

### 1023106 - Lighting Control Unit



Description	Weight
Lighting Control Unit	935g



IP20



\* The LCU should be used in conjunction with the correct maintenance manual for both installation and commissioning.

LPA Excil Electronics  
Ripley Drive  
Normanton  
Wakefield  
WF6 1QT

Email | www.lpa-group.com  
Website | +44 (0) 1924 224100  
Switchboard | +44 (0) 1924 224111  
Fax | +44 (0) 1924 224111

# Installation Guide

Input connector - M12-A	
Pin 1	Supply Positive
Pin 2	Supply Negative
Pin 3/4	N/C
Ethernet Connector M12-B	
Pin 1	TD+
Pin 2	RD+
Pin 3	TD-
Pin 4	RD-
Control Bus Connector—Amphenol Air LB—Female	
Pin 1	CTRL 0 Pair A
Pin 2	CTRL 1 Pair A
Pin 3	CTRL 0 Pair B
Pin 4	CTRL 1 Pair B
Pin 5-8	N/C
Voltage Free Contact—Amphenol Air LB—Male	
Pin 1	Pair 1 NO
Pin 2	Pair 1 COM
Pin 3	Pair 2 NO
Pin 4	Pair 2 COM
Pin 5	Pair 3 NO
Pin 6	Pair 3 COM
Pin 7	Pair 4 NO
Pin 8	Pair 4 COM

## Compliance

The 1023 Series complies with the following standards:

- › EN61373:1999 Rolling stock equipment. Shock and vibration.
- › EN50121-3-2:2006 Rolling stock equipment. Electromagnetic compatibility.
- › EN50155:2007 Electronic equipment used on rolling stock.



**IP20**



LPA Excil Electronics  
Ripley Drive  
Normanton  
Wakefield  
WF6 1QT

Email | www.lpa-group.com  
Website | +44 (0) 1924 224100  
Switchboard | +44 (0) 1924 224111  
Fax | +44 (0) 1924 224111